

PHILIPPINE CHILDREN'S MEDICAL CENTER

Quezon Avenue, Quezon City

Build with us:

**Annual
Report**
2017



**Community Partnership
for a more Responsive
Service to Children**



Editor-in-Chief
JULIUS A. LECCIONES, M.D., CESO III



Associate Editor
VICENTE PATRICIO R. GOMEZ M.D., CESE



Supervising Editor
EMMA A. MARIANO C.P.A.
ARNEL DISTOR M.B.A.



Concept and Design
ALEXANDER G. PEÑA
JESUS ALFREDO D. DE LOS SANTOS



Photography and Content Contributors
ALL CENTERS & UNITS,
PATIENTS & THEIR FAMILIES



OUR COVER

Build with us: Community Partnership for a more Responsive Service to Children

Reflects the Bayanihan Spirit, value and essence of every Pinoy. Helping out the community and taking part on every endeavor together, lessening the workload and making the task easier.



| | |
|--|---------|
| History | 1 - 2 |
| Strategy Map 2017 - 2022 | 3 |
| Hospital Statistics | 4 - 6 |
| Performance Governance System | 7 - 13 |
| Training and Research | 14 |
| Training and Fellowship | 15 - 17 |
| Research and Development | 18 - 19 |
| Executive Summary | 20 - 27 |
| Organizational Chart | 28 - 33 |
| 37th Anniversary Events and Highlights | 34 - 38 |
| Infrastructure | 39 - 41 |
| Volunteers and Donors | 42 - 54 |
| Awards, Recognitions and Citations | 55 - 57 |
| PCMC Hymn | 58 |



The Theme of the International Year of the Child in 1979, 'mankind owes to the child the the best it has to give' inspired the concept and the impetus to provide to children a tertiary institution for expert health care. By August 10, 1979, P.D. 1631 created the hospital known as Lungsod ng Kabataan. This was inaugurated on April 29, 1980, graced by the presence of Her Royal Highness Princess Margaret of the United Kingdom. On June 30, 1980, under then the Minister of Human Settlements, First Lady Imelda R. Marcos, the hospital first opened its doors to commence delivering expert healthcare to children.

Seven years later, on January 12, 1987 Malacanang issued Memorandum Order No. 2, renaming the hospital as the Philippine Children's Medical Center or PCMC. PCMC began with 47 active medical staff composed of recognized pediatrics and pediatric surgeons who pioneered the clinical service initially offered, to with Ambulatory, In-Patient Care, Surgery, and Critical Care. At about the same time, the Department of Laboratories and the Physical Rehabilitation Unit were also established and became fully operational. From 1983 to 1985, PCMC expanded its activities in patient care services, Residency and Fellowship training, and in continuing medical education. Improvement in physical infrastructure and the creation of more service components became the focus toward the late 1980's. Pediatric subspecialties such as Neonatology, Pulmonology, Nephrology, Cardiology, Hematology, and Allergology under the Department of Pediatric Medicine were subsequently established.





Lungsod ng Kabataan is described as a “Wonderland for Children”. Thus inside the hospital, the child is greeted by colorful, educational, cultural and historical murals that line its corridors. The rooms have various fancy beds designed as jeepneys, fire wagons, speedboats, and sleepers or bakya. This aims to make the child's hospital stay a soothing and comfortable experience, as well as informative, educational and enjoyable. The decorative rooms also distract children from their illness and pain, making their environment conducive and healing.





VISION

PCMC is the premier institution in Pediatric Research, Training, and Service

Improved Health Outcomes for Children and High-Risk Pregnant Women



IMPACT

Strengthen institutional research addressing the country's pediatric and perinatal health priorities



Provide access to PCMC's standard of care in underserved and depressed areas

STRATEGIC FOCUS

Institutionalize evidence-based practices from collaborative and multi-disciplinary research



Address gaps in local healthcare delivery through innovative training programs



Upgrade a universally accessible delivery to meet or surpass internationally accepted standards of care

SUPPORT PROCESS

Develop a competent work force to support PCMC's strategic position

Live a culture of quality and safety to meet international standards

Build a globally benchmarked and Filipino-centered Health complex

Establish appropriate IT platforms to support strategic expansion

Adopt responsible environment-focused processes for all interested parties

Diversify fund sources by partnering with private and public sectors.

MISSION

We conduct collaborative research and train our people to deliver the most responsive service for vulnerable children and high-risk pregnant women.

CORE VALUES

Professionalism
Citizen-focused
Malasakit
Creativity



Admission by Center

2017



2016



2015





84,021
total patient consultation:
16,518 from Emergency
and 67,5003 from Our-Patient



22%
increase from the
past 6 years



11,962
total patient admission:
6,798 Service Patients and
3,648 Pay Patients

30:70
ratio of Pay to Service



98%
Occupancy Rate
6
days average length of stay



3.3%
Mortality rate

2.62%
Hospital infection ratio, considering
that the most difficult and complicated
cases are the ones being managed
in the hospital



| | DIAGNOSIS | 2017 | DIAGNOSIS | 2016 | DIAGNOSIS | 2015 |
|----|----------------------------|------|----------------------------|------|---------------------------------|------|
| 1 | DENGUE (DF, DHF, DS) | 760 | PNEUMONIA | 932 | DENGUE (DF, DHF, DFS, DSS) | 1125 |
| 2 | ACUTE LYMPHOCYTIC LEUKEMIA | 684 | ACUTE LYMPHOCYTIC LEUKEMIA | 860 | LEUKEMIA (ALL, AML, CML, BIPHE) | 1074 |
| 3 | PNEUMONIA | 517 | DENGUE (DF, DHF, DFS, DSS) | 540 | PNEUMONIA | 592 |
| 4 | ACUTE GASTROENTERITIS | 174 | ACUTE GASTROENTERITIS | 275 | ACUTE GASTROENTERITIS | 201 |
| 5 | ACUTE MYELOGENOUS LEUKEMIA | 138 | ACUTE MYELOGENOUS LEUKEMIA | 252 | PREMATURITY | 148 |
| 6 | THALASSEMIA | 135 | THALASSEMIA | 210 | THALASSEMIA | 126 |
| 7 | PREMATURITY | 117 | PREMATURITY | 174 | RHABDOMYOSARCOMA | 97 |
| 8 | OSTEOSARCOMA | 107 | OSTEOSARCOMA | 157 | OSTEOSARCOMA | 96 |
| 9 | HIRSCHSPRUNG'S DISEASE | 93 | HIRSCHSPRUNG'S DISEASE | 127 | HIRSCHSPRUNG'S DISEASE | 95 |
| 10 | NEPHROTIC SYNDROME | 80 | RHABDOMYOSARCOMA | 122 | BRONCHIAL ASTHMA | 82 |

TOP TEN CAUSES OF MORTALITY

| | 2017 | 2016 | 2015 |
|----|----------------------------|---|-------------------------------------|
| 1 | Pneumonia | Pneumonia | Leukemia (ALL, AML, CML) |
| 2 | Septic Shock | Prematurity | Pneumonia |
| 3 | Prematurity | Acute Lymphocytic Leukemia | Prematurity |
| 4 | Acute Lymphocytic Leukemia | Acute Myelogenous Leukemia | Acute Respiratory Distress Syndrome |
| 5 | Dengue Severe | Dengue Hemorrhagic Fever | Multiple Organ Dysfunction Syndrome |
| 6 | Acute Myelogenous Leukemia | Sepsis | Dengue Hemorrhagic Fever |
| 7 | Sepsis | Disseminated Intravascular Coagulopathy | Aplastic Anemia |
| 8 | TB Meningitis | Acute Respiratory Distress Syndrome | TB Meningitis |
| 9 | Hepatic Encephalopathy | Brain Herniation | Congenital Anomalies |
| 10 | Rhabdomyosarcoma | Congenital Heart Disease | Rhabdomyosarcoma |

Performance Governance System



The PCMC DREAM TEAM CHAMPIONS

Known for its resiliency to changes, PCMC made a bold step in taking a transformation journey to unlock new avenues, perspectives, and diverse possibilities. In order to fulfill its mission of improving the health outcomes of vulnerable Filipino children, the Office for Strategy Management was created.

Governance Scorecard and Performance Highlights

| OBJECTIVE | MEASURE | 2017 | TARGET | | | | | PROJECT | |
|---|--|-----------------------|--------|------|------|------|------|--|--|
| | | | 2018 | 2019 | 2020 | 2021 | 2022 | | |
| RESEARCH | | | | | | | | | |
| Institutionalize evidence-based practices from collaborative and multi-disciplinary research. | Number of published best practices adopted PCMC-wide | Pneumonia | 2 | 3 | 4 | 5 | 6 | 7 | PCMC Institutional Research Projects on identified Priority Diseases |
| | | Dengue | 1 | 3 | 5 | 5 | 6 | 7 | |
| | | Acute Gastroenteritis | 1 | 2 | 3 | 4 | 5 | 6 | Certification Program for Good Clinical Practice (GCP) |
| | | Teenage Pregnancy | 1 | 1 | 2 | 3 | 3 | 3 | |
| | | Acute Leukemia | 2 | 3 | 5 | 5 | 7 | 8 | Accreditation of PCMC Ethics Committee |
| TRAINING | | | | | | | | | |
| Address gaps in local healthcare delivery through innovative training programs | Number of targeted provinces covered by PCMC-crafted Training Modules on priority diseases | 3 | 4 | 5 | 10 | 10 | 15 | Innovative Training Programs Developed for General Practitioners and Nurses | |
| SERVICE | | | | | | | | | |
| Upgrade universally-accessible service delivery to meet or surpass internationally accepted standard of care. | Number of priority diseases with PCMC survival rates at par or better than internationally-accepted standards. | 5 | 5 | 5 | +3 | +4 | +5 | Patient Information Tracking System for Top Three Diseases per Clinical Center Creation of Service Delivery Networks (SDN) for at least one disease per Clinical Center | |

| OBJECTIVE | MEASURE | 2017 | TARGET | | | | | PROJECT |
|--|--|------|--------|-------|-------|-------|-------|---|
| | | | 2018 | 2019 | 2020 | 2021 | 2022 | |
| SUPPORT TO OPERATION | | | | | | | | |
| Develop a competent work force to support PCMC strategic position | % filled-up positions by personnel meeting competency standards following the approved Restructuring Plan | 44% | 47% | 60% | 70% | 80% | 100% | Competency-based HR System (HRS) |
| Live a culture of quality and safety to meet international standards | Incidence Rate of Medication Errors | <1% | <0.5% | <0.5% | <0.5% | <0.5% | <0.5% | Patient Safety Program |
| | Incidence Rate of Falls | <1% | <0.5% | <0.5% | <0.5% | <0.5% | <0.5% | |
| Establish appropriate IT platforms to support strategic expansion | Functionality of 12 Targeted IT Strategic Solutions | 1 | 6 | 8 | 9 | 10 | 12 | Customized Master Information System Strategic Plan |
| Build a globally-benchmarked and Filipino-Centered Health Complex | Renovation of main hospital building | 10% | 50% | 75% | 100% | — | — | PCMC Infrastructure |
| | New building construction | 10% | 50% | 70% | 80% | 90% | 100% | Master Plan |
| | Cancer Center construction | 0% | 50% | 100% | — | — | — | |
| | Brain center construction | 0% | 50% | 100% | — | — | — | |
| Adopt and replicate green procurement processes for sustainability | Percentage of total number of manufacturers and distributors compliant to at least 2 of the 4 Green Principles | 10% | 50% | 75% | 100% | — | — | Go Green Procurement Program with an Outreach Component |
| Diversify fund sources by engaging partners both from private and public (local and international) sectors | GAA support | 62% | 60% | 58% | 53% | 48% | 40% | Participatory Fund Sourcing (HSS) |
| | vs Internal/Corporate Income | 38% | 40% | 42% | 47% | 52% | 60% | |



Performance Governance System





**Philippine Heart Center's Governance
in Healthcare Summit, Module I**
(March, 2017)

PGS-ISA Strategic Planning & Pre-Revalida Workshop in Martessem Mountain Resort Tanay, Rizal (June 7-9, 2017)



**PGS-ISA Workshop at
Dolce Latte**
3 Ave, Quezon City
June 13, 2017



**Meeting of PGS Technical Working
Group at the Ambulatory Office**



PGS - ISA Initiation Revalida



Bayanihan Center UNILAB Compound *Pasig City (June 21, 2017)*



ISA
INSTITUTE FOR SOLIDARITY IN ASIA

**NATIONAL
COMPETITIVENESS
COUNCIL OF PHILIPPINES**

PGS

PERFORMANCE GOVERNANCE SYSTEM

*The Institute for Solidarity in Asia
and the National Competitive Council recognize*

THE PHILIPPINE CHILDREN'S MEDICAL CENTER

*for its tireless pursuit of governance and long-term development
in the service of the Philippines and the Filipino.*



Initiated




Established




Perfected



Institutionalized


RAMON D. DE OCOMPO
President for Solidarity in Asia
Institute for Solidarity in Asia
Manila, Philippines


GERARDO M. LEE
National Competitive Council
Manila, Philippines



OFFICE OF PROFESSIONAL EDUCATION AND TRAINING (OPET)

Trainees are selected without discrimination to Race, Religion, Political belief or age as long as they have the requirements to train under the Department of Health. Many Foreigners (Indonesia, Nepal) But applicants for positions ratio 3:1

Selection is "biased" based on several factors:

Best candidates for possible future Fellows and members of the Consultant staff (SUCCESSION) Need for the specialists in their home province as requested by their hospitals Survey of the OPET on the distribution of Specialists in the far flung areas of the country.

TOTAL RESIDENT GRADUATES

1982-2017

| | |
|--|-----|
| Pediatric Residency | 405 |
| NCR | 178 |
| Within 100 Km of NCR | 97 |
| Other Regions | 93 |
| Abroad (Alaska, Canada, US, UK Ireland, England, Germany, Nepal Indonesia, Australia, New Zealand) | 37 |





THE FELLOWSHIP PROGRAMS

As the population grows and access to health care improves, the need for subspecialists is evident PCMC actively seeks out training programs abroad and sends our graduates and consultant staff to various centers for further training and transfer for technology back to the Philippines.

Most subspecialty programs in the country were started at PCMC

Subspecialty Programs

| | |
|---------------------------------|---------------------------------|
| Adolescent Medicine (1995) | Neurology (1988) |
| Ambulatory Medicine (1994) | Perinatology (1989) |
| Hema-Onco (1991) | Pediatric Gynecology (2003) |
| Infectious Disease (1992) | Pediatric Surgery (1980) |
| Nephrology (1987) | Pediatric Anesthesia (1987) |
| Pulmonology (1987) | Radiology (2002) |
| Pediatric Intensive Care (1986) | Research (2000) |
| Neonatology (1993) | Pediatric Urology (2008) |
| Developmental Pediatrics (1998) | Perinatal Anesthesiology (2009) |
| Psychiatry (1990) | |

FELLOWSHIP GRADUATES

| | |
|---|------------|
| <i>1990-2017</i> | |
| <i>Fellows</i> | <i>353</i> |
| <i>NCR</i> | <i>178</i> |
| <i>Within 100 km of NCR</i> | <i>30</i> |
| <i>Other Regions</i> | <i>123</i> |
| <i>Abroad (Canada, US, England, Ireland, Indonesia, Singapore, Australia)</i> | <i>22</i> |

PCMC FELLOWSHIP TRAINING GRADUATES

Place of Practice

- LEGEND**
- ADOLESCENT MEDICINE
 - AMBULATORY PEDIATRICS
 - ANESTHESIA
 - CHILD NEUROLOGY
 - CHILD PSYCHIATRY
 - CRITICAL CARE
 - DERMATOLOGY
 - EOS AND CLINICAL EPILEPSY
 - GASTROENTEROLOGY, HEPATOLOGY AND NUTRITION
 - HEMATOLOGY-ONCOLOGY
 - INFECTIOUS DISEASES
 - NEONATOLOGY
 - NEPHROLOGY
 - NEURODEVELOPMENTAL PEDIATRICS
 - NEUROSCIOLOGY
 - PEDIATRIC
 - PEDIATRIC DENTISTRY
 - PEDIATRIC GYNECOLOGY
 - PEDIATRIC SURGERY
 - PERI-ANESTHESIA
 - PERINATOLOGY
 - PULMONOLOGY
 - UROLOGY





*PCMC is the Department of Health's flagship hospital
for top quality pediatric specialty care in the country*

Research





RESEARCH DEVELOPMENT OFFICE (RDO)

Created on February 15, 1991 Reviews and approves all Research papers which are requirements for all Residents and Fellows for graduation IRB for all studies including industry funded studies where PCMC patients are involved

PCMC RESEARCH PUBLICATIONS

Publishes PCMC Journal, the Research Primer, Annual Research Forum and Protocol Development Lectures



Given a 3 year re-accreditation status as a Level IV training institution by the Philippine Pediatric Society (PPS) Conducts 2 major seminars: Research Ethics Workshop Good Clinical Practice Workshop Level 3 Research Ethics Committee (REC) accredited by Philippine Health Research Ethics Board

18 PCMC Journal Publications (1992-2014)

383 Original Research paper Abstract of Residents and Fellows published in the PCMC Book of Abstracts (1995-2006) PCMC Abstract of Research Studies done in 2007 and part of 2017 can be accessed at the PCMC Website @ pcmc.gov.ph



EXECUTIVE SUMMARY



2017 ANNUAL REPORT

EXECUTIVE SUMMARY

For calendar year 2017, the Philippine Children's Medical Center (PCMC) is a recipient of P544,163,000 subsidy. The amount was provided and allotted under General Appropriation Act of 2017. Of the total subsidy, the P538,163,000 is intended for the Operation and the balance of P6,000,000 is intended for the cost of Engineering Design for Renovation of Ground Floor and Second Floor of PCMCs Main Building

The amount of P538,163,000 was released by the Department of Budget and Management thru the Bureau of Treasury. The unreleased balance of P6,000,000 was recorded as receivable from the National Government. Both the amount received and unreleased balance of subsidy totaling to P544,163,000 was recorded in the books of accounts of PCMC as non-operating income (subsidy) during the year.

Registered hospital corporate income for the year totaled to P327,707,179. It incurred total expenditures of P863,153,051. The Center's assets, liabilities and equity as of December 31, 2017 were P3,226,187,225, P1,067,641,262 and P2,158,545,963 respectively, registering decreases in assets, liabilities by 31% and 58% respectively, and increase in equity of 1%, over that of CY 2016.

PCMC still rose above all odds. In terms of liquidity, its current assets composed of cash, receivables and inventories are enough to pay its liabilities. Current ratio, acid test ratio and debt ratio were registered at 1.06:1, 0.26:1 and 0.49:1 respectively.

Through concerted efforts, diligent review and proper coordination and cooperation of other offices, zero COA disallowance was recorded in spite of voluminous transactions prepared, processed, verified and pre-audited within the Finance Division.



2017 PCMC CORPORATE OPERATING BUDGET

(In Million Pesos)

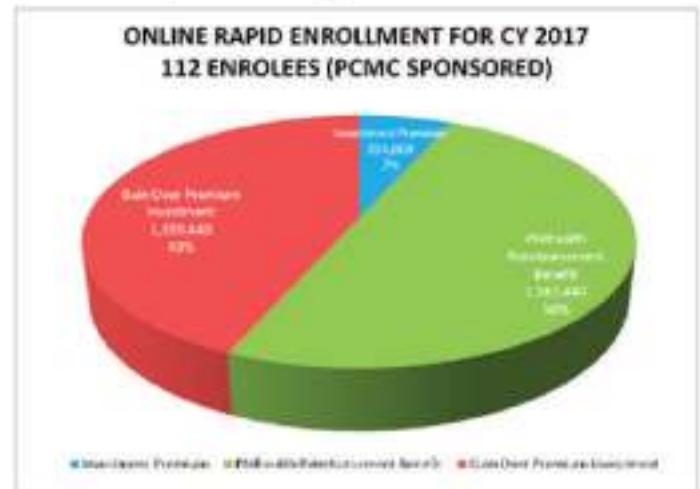
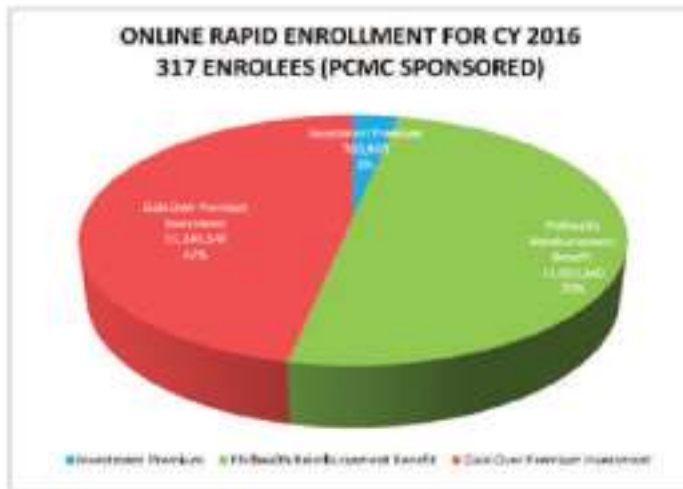
| | Target | Realized/Spent | % Realized/ Spent | Remarks |
|--------------------------|---------------|----------------|-------------------------|--|
| Sources of Funds: | | | | |
| Subsidy | 544.16 | 538.16 | 99% | P6 million for installment release |
| Corporate Income | 305.00 | 327.71 | 107% | |
| Retained Earnings | 140.17 | 0 | 0% | No Retained Earnings used as funding source |
| Total | 989.33 | 865.87 | 87% | |
| Uses of Funds: | | | | |
| Personal Services | 684.17 | 610.46 | 89% | |
| MOOE | 299.16 | 252.69 | 84% | Cost of Goods Sold - supplies and materials included |
| Equipment Outlay | 0 | 0 | 0 | |
| Capital Outlay | 6.00 | 0 | 0 | For installment release |
| Total | 989.33 | 863.15 | 87% | |

2017 PCMC EQUITY (In Billion Pesos)

| | |
|--------------------------|-----------------|
| Total Assets | 3,226.18 |
| Total Liabilities | 1,067.64 |
| Equity | 2,158.54 |



Ore Premium Vs Reimbursement (In Millions)



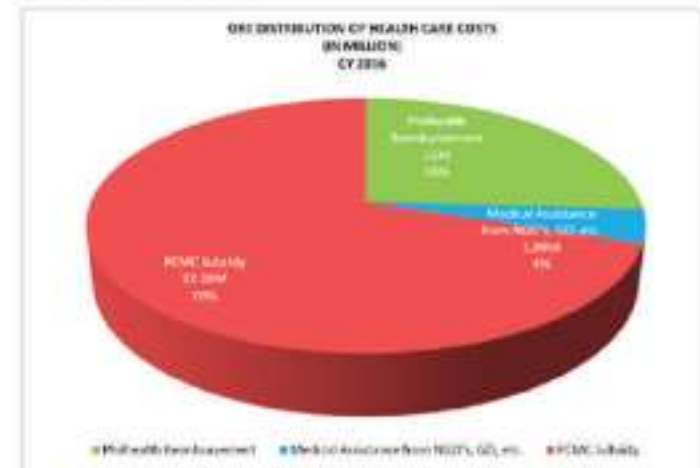
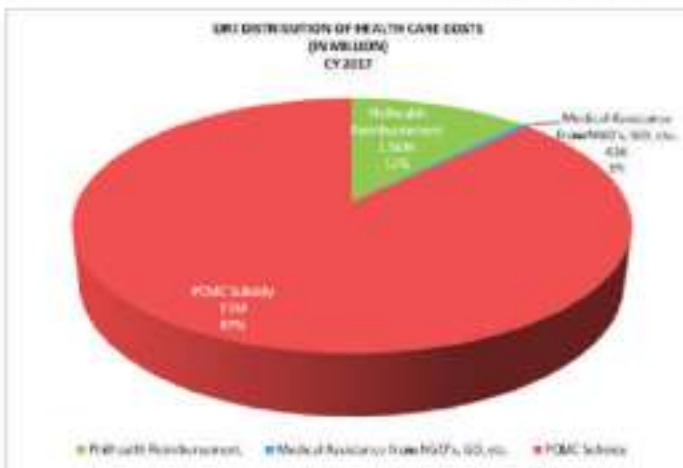
ORE PROGRAM 2016:

| | |
|----------------------------------|--------------|
| Investment Premium | P 760,800 |
| PhilHealth Reimbursement Benefit | P 12,002,340 |
| Gain Over Premium Invested | P 11,241,540 |

ORE PROGRAM 2017:

| | |
|----------------------------------|-------------|
| Investment Premium | P 204,000 |
| PhilHealth Reimbursement Benefit | P 1,563,440 |
| Gain Over Premium Invested | P 1,359,440 |

Online Rapid Enrollment Distribution Of Health Care Costs



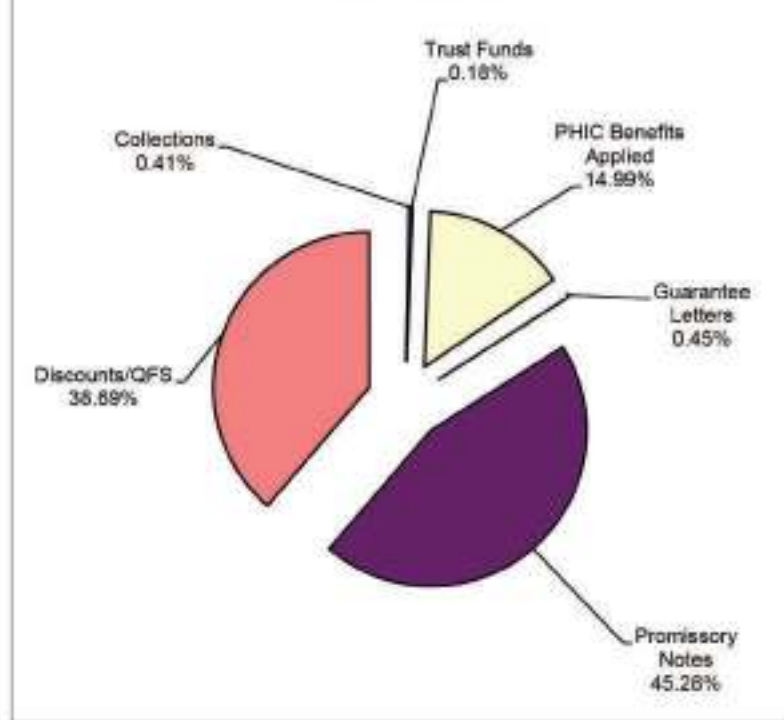
| Total Hospital Bills + Premium Payment | Philhealth Reimbursement | Medical Assistance from NGO's, GO, etc. | PCMC Subsidy |
|--|--------------------------|---|--------------|
| 12.63 | 1.56 | 0.06 | 11 |

| Total Hospital Bills + Premium Payment | Philhealth Reimbursement | Medical Assistance from NGO's, GO, etc. | PCMC Subsidy |
|--|--------------------------|---|--------------|
| 46.35 | 12.00 | 1.99 | 32.36 |

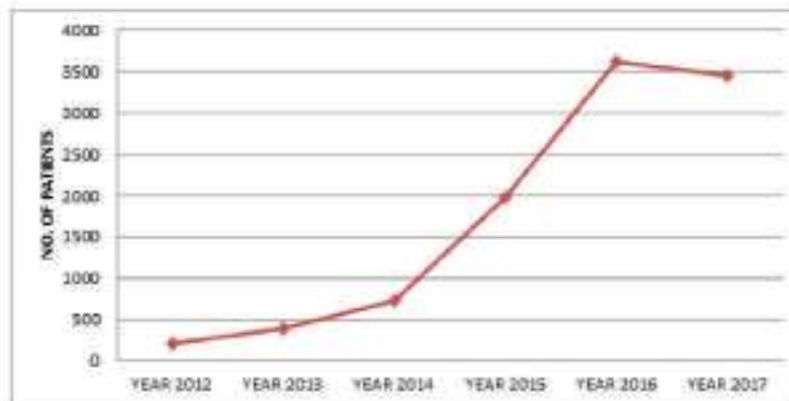
Note: In 2017, during the 2nd semester the MSS suspend enrolment for 2 Months because of disabled Philhealth Online Rapid Enrollment System.



NBB Patients' Bills Account Distribution CY 2017



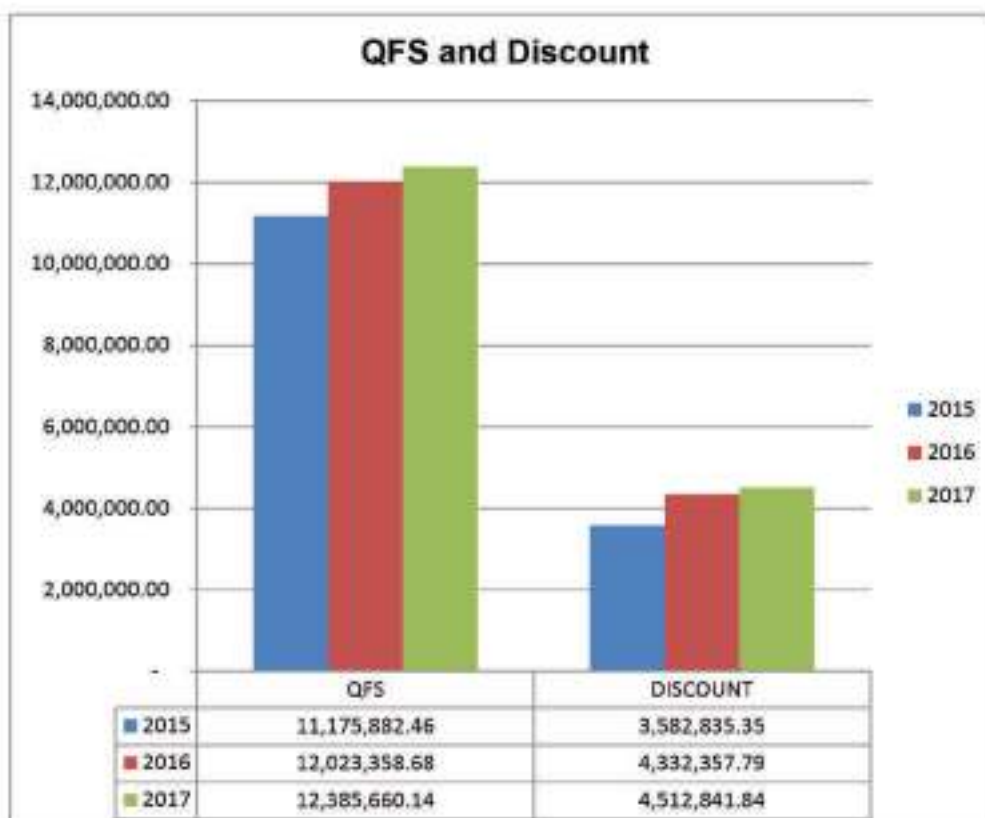
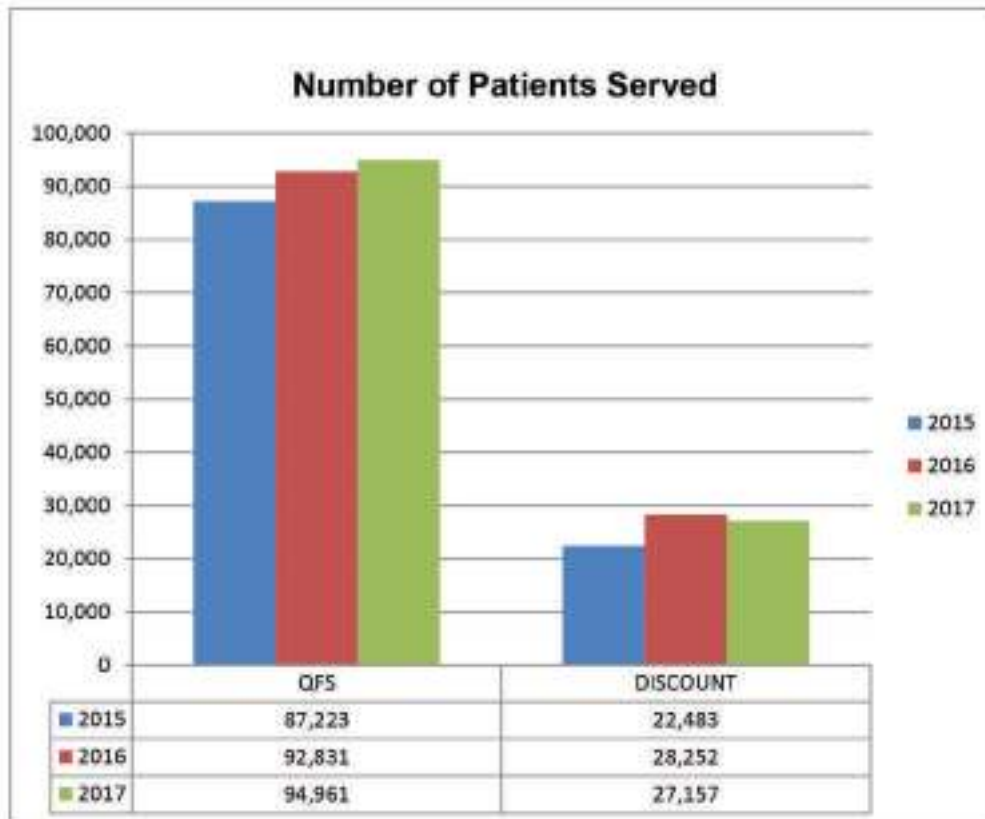
No Balance Billing Beneficiaries Total In / Out Patient



| YEAR | NO. OF PATIENTS |
|--------------|-----------------|
| 2017 | 3455 |
| 2016 | 3605 |
| 2015 | 1975 |
| 2014 | 723 |
| 2013 | 384 |
| 2012 | 200 |
| TOTAL | 10342 |

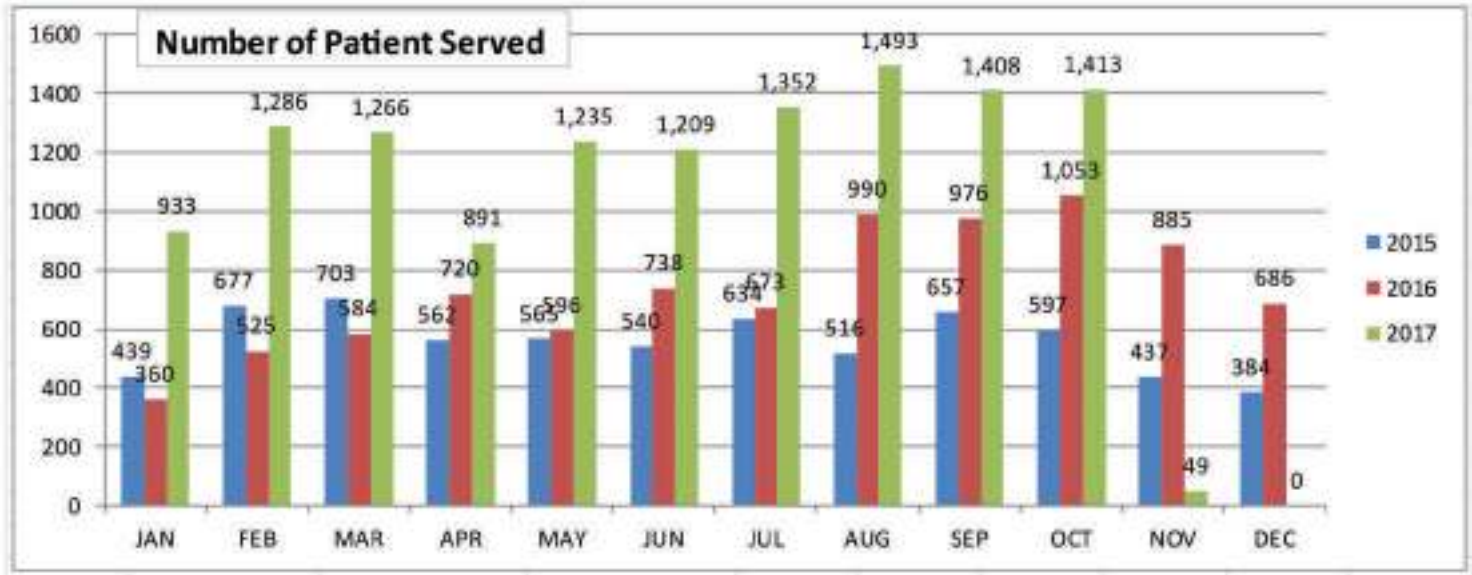


Quantified Free Service (QFS) and Discount





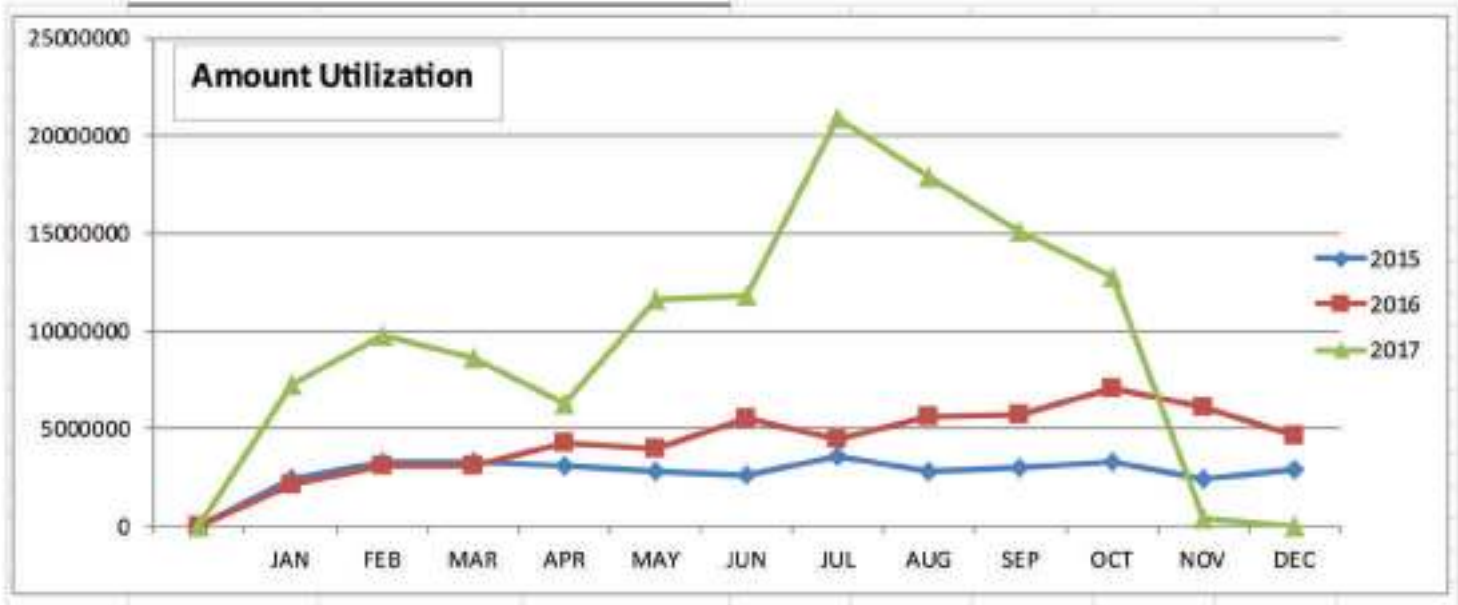
DOH - Medical Assistance Fund Program



| | Number of Patient Served | | |
|--------------|--------------------------|--------------|---------------|
| | 2015 | 2016 | 2017 |
| JAN | 439 | 360 | 933 |
| FEB | 677 | 525 | 1,286 |
| MAR | 703 | 584 | 1,266 |
| APR | 562 | 720 | 891 |
| MAY | 565 | 596 | 1,235 |
| JUN | 540 | 738 | 1,209 |
| JUL | 634 | 673 | 1,352 |
| AUG | 516 | 990 | 1,493 |
| SEP | 657 | 976 | 1,408 |
| OCT | 597 | 1,053 | 1,413 |
| NOV | 437 | 885 | 49 |
| DEC | 384 | 686 | 0 |
| TOTAL | 6,711 | 8,786 | 12,535 |



DOH - Medical Assistance Fund Program



| DOH-MAP | Amount Utilization | | |
|--------------|----------------------|----------------------|-----------------------|
| | 2015 | 2016 | 2017 |
| JAN | 2,439,377.57 | 2,164,152.05 | 7,281,995.18 |
| FEB | 3,320,590.03 | 3,141,509.72 | 9,772,071.03 |
| MAR | 3,270,090.93 | 3,152,647.86 | 8,572,472.96 |
| APR | 3,094,216.60 | 4,261,409.00 | 6,255,700.58 |
| MAY | 2,790,708.62 | 4,005,931.00 | 11,644,039.47 |
| JUN | 2,635,294.35 | 5,489,974.80 | 11,775,233.07 |
| JUL | 3,631,494.27 | 4,511,162.30 | 20,912,115.00 |
| AUG | 2,781,439.87 | 5,629,006.34 | 17,925,445.49 |
| SEP | 2,976,649.00 | 5,754,085.06 | 15,058,043.21 |
| OCT | 3,272,047.50 | 7,055,379.09 | 12,758,803.14 |
| NOV | 2,445,408.00 | 6,125,525.32 | 380,743.35 |
| DEC | 2,927,866.17 | 4,683,031.20 | 0.00 |
| TOTAL | 35,585,182.91 | 55,973,813.74 | 122,336,662.48 |



ORGANIZATIONAL CHART



BOARD OF TRUSTEES

Dr. Francisco T. Duque III

(Secretary of Health - Chairperson)

Members

Dr. Gerardo V. Bayugo

(Undersecretary - Department of Health)

Atty. Alberto A. Bernardo

(Executive Secretary - Office of the President)

Dr. Luz M. Cantor

(Undersecretary - Department of Budget and Management)

Dr. Lilibeth C. David

(Undersecretary - Department of Health)

Dr. Ma. Carolina Vidal-Taino

(Undersecretary - Department of Health)

Dr. Roger P. Tong-An

(Undersecretary - Department of Health)

Dr. Herminigildo V. Valle

(Undersecretary - Department of Health)

Dr. Mario C. Villaverde

(Undersecretary - Department of Health)

MANAGEMENT COMMITTEE

Dr. Julius A. Lecciones, MPM, MHSA, MSChSM, CESO III

(Executive Director)

Dr. Vicente Patricio R. Gomez, CESE

(Deputy Director for Professional Services)

Jara Corazon O. Ehera, CEO VI, MSChSM

(Deputy Director for Hospital Support Services)

Amelinda S. Magno, RN, PHD

(Deputy Director for Hospital Support Services)

Rodolfo Delos Reyes

(Head, Human Resource Management Division)

Dr. Mary Ann C. Bunyi

(OIC, Office of Professional Education & Training)

Dr. Ma. Eva I. Jopson

(OIC, Office of Research Development)

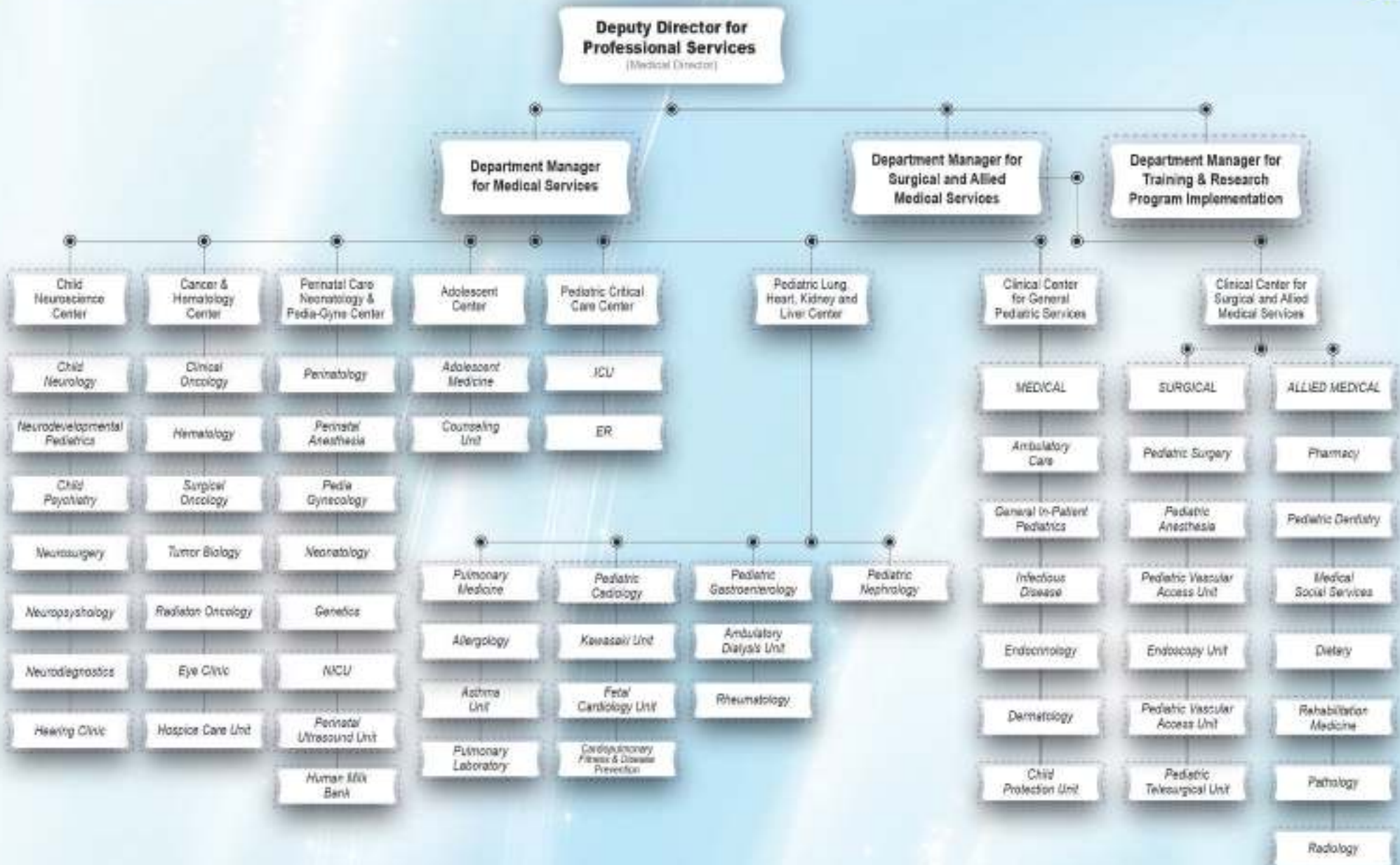
Dr. Grace J. Dela Calzada

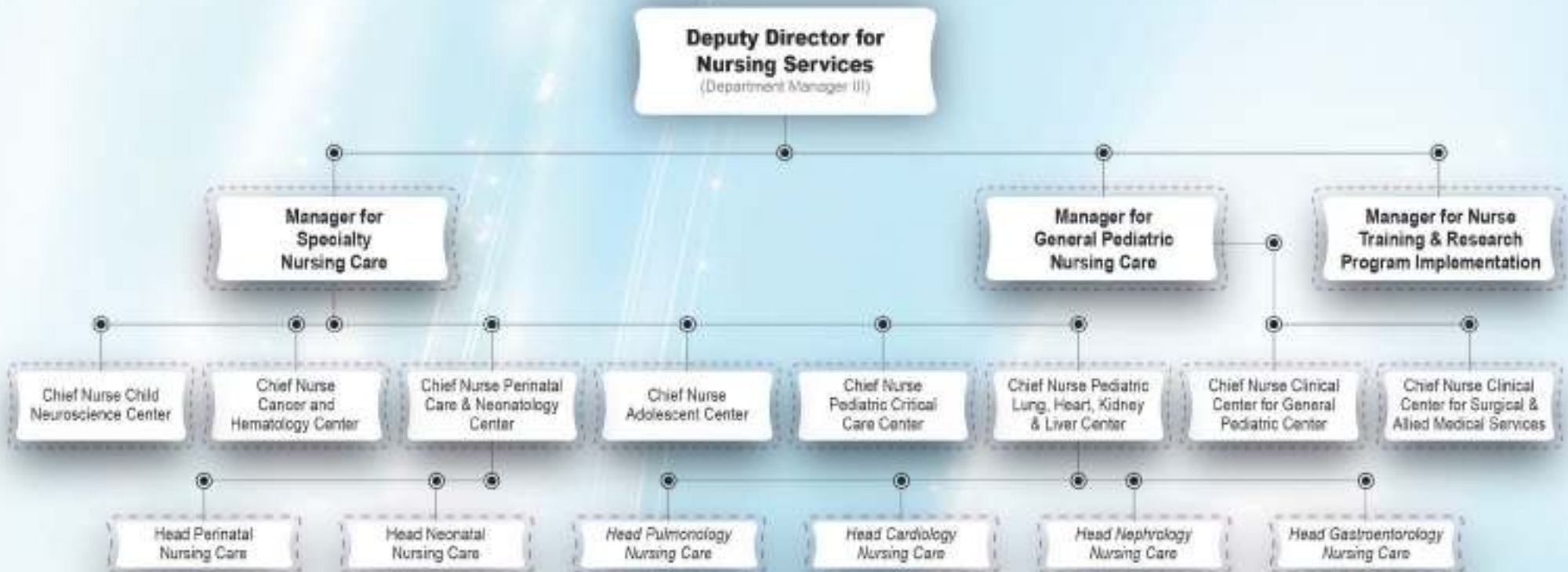
(Head, Quality Management Office)

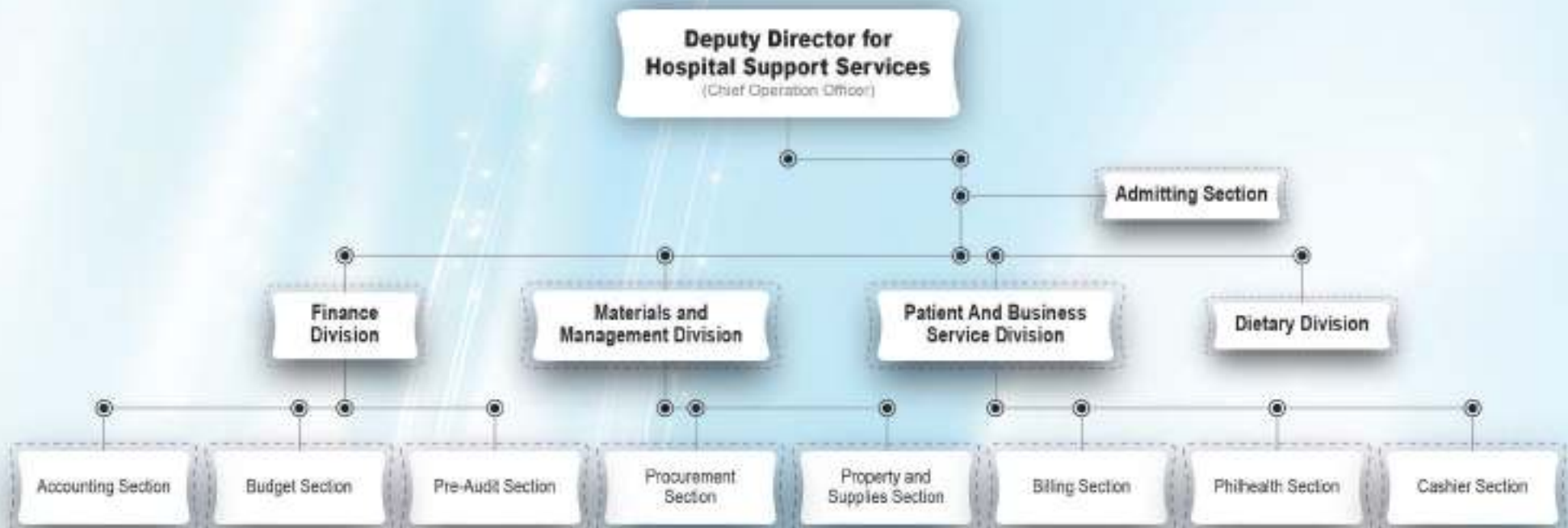
Dr. Sonia B. Gonzales

(Department Manager, Medical Services)











PCMC 37TH ANNIVERSARY

Events And Highlights

37th PCMC Anniversary



Employee's Program

April 25, 2017



37th PCMC Anniversary



**Palarong
Pinoy**
April 23, 2017



**Children's
Program**
April 25, 2017



37th PCMC Anniversary



Partners

April 23, 2017



37th PCMC Anniversary



Community Advocacy Partners

December 22, 2017





Pediatric Hemodialysis Center

Blessing of Pediatric Hemodialysis Center

The First Hemodialysis Center Dedicated For Children

PHILHEALTH ACCREDITED



Our on-going construction



Infrastructure

*"Eight Storey
Patient's Building"*



3rd Floor Renovation





*VOLUNTEERS
AND
DONORS*



We will ca



children





we for you



of life





Maraming Maraming Salamat po Sa Mga Kaakbay, Kasama Namin!

VOLUNTEERS

Aaron Aliston
Abigail / Sonny Malimas and family
ABS/CBN "Ang Probinsyano" - PJ Theamtusana visit by Coco Martin c/o Mark
Ace Navaro
AGAPE - Mr. Russel Barros
Aileen Monica Galang
Aimee Sedano
Aireen De Villa-Blush
ALAP Ms Diane
AIDub Nation QC. Chapter - Ms. Jinky Barico
Alexa Peralta - bday and friends
Alorica Philippines
Alpha Omega Cosplayers - Miss Mae
Alpha Sigma Phi Fraternity - Mr. Jose Ma. Joaquin B. Buñag
Amelita Rosal and Friends
American Women Foundation c/o Ms. Fe Sisteberio
AMH Philippines, Inc. Ms. Gemalyn M. Villacorta (UP)
Andres, John Rudolf
Angelica Lazatin
Angie Dizon
Ann Nicole Neri
Anna Payawal
Annie Barrameda / Alex Barrameda
Annie de Luna - friend Ms. Jenifer Santos (Nurse supervisor)
Anonymous Donors c/o Dra Bea Gepta
Anonymous Donors c/o Gizelle Jumantoc
Anonymous Donors c/o Mr. Noel Olid - Radiology
Anonymous Donors C/o Ms. Charie Nillas
Anonymous Donors c/o Ms. Kath Malupa
Anonymous Donors c/o Ms. Malu Pablo
Anonymous Donors CANVASS
Anthony Caliclio
ANZA - Mana
ANZA Ladies - Australia/New Zealand
APO Epsilon Alum. Assoc. Mr. Frederick Art Morales
April Casabuena
April Jun Parman / JLLVCI
Arbato Corporation - friend Mr. Sam Adier (PABX)
Archie and Judith Riva
Archie Martinez
Archieval Soriano
Ariel Start Ocampo - group of Engineers
Arnaldo / Evelyn Reyes
ASCENT - Ms. Licel Esguerra



Maraming Maraming Salamat po Sa Mga Kaakbay, Kasama Namin!

VOLUNTEERS

Asia Select thru Ms. Karen Benin
Ateneo de Manila Univ. Grad. Sch. Of Business - Dr. Jacqueline Angeles
Atty Alberto Agra
Atty. Allones / Ms. Trixie Estanislao (CSC)
Atty. Ayn Marie Grace G. Barit- Cang
Atty. Joel Ferrer / The Law Firm of Ferrer
Atty. Lorelee Granado
Balugay, Ernesto
Bangko Sentral ng Pilipinas - Rouena L Rosal - OIC
Beacon of Hope - Mr. John Cedric Pineda
Berna Ramos
BIR Catholic Community -Ms. Leticia C. Batausa
Blynn Chua
Brave Warrior Kids - Mr. Noel Lopez
Bravevandross E. Rama
Burden to Zero Group
Carla de Guzman
Carlo Somera - (lab. Staff)
Carmelita Peralta
Cathedral of Praise - Dr. Leona Paula Mallari (Resident) and Dr. Mallari
Cathedral of Praise - Dr. Mallari (PCMC Dr. Leona Mallari)
Catherine Sebastina
Cathy Lyn Demonalata -Bona
Celine Baylon-Tan (former resident) / Jayson Camacho
Cesar Villariz and company - PCMC ER Nurse
CEU - Mr. Eri Gomez
Charina Roa / Bea Roa
Cherry Bolo
Club 200 Riders Association - Julius Avenido
Concentrix - Brother Mam Grace (HRMD)
CONG. SCOTT LLANETE - Jbee party - Neuro
Cong. Velarde
Councilor Marvin Rillo - Ms. Vicky Segundo
Crayons Inc.- Benjamin L. Montilla - Miss Jen
Cristy Ann Samson & Family (former NICU pt- survivor)
CUDDLE BUDDIES - Jeremy M. Cresencio
Cyberhians / Rhian Ramos fans club / Abby Magpantay / Sheila Bautista
Dang Manuel
Dangerous Drugs Board
David G. Araojo
Ding-ay Tadena - friend Mam Amy Magno
Ditas G. Yacaba
Doctors in Touch - friend Dr. Robles - Dr. Victoria I. Ang
Dona Castillo



Maraming Maraming Salamat po Sa Mga Kaakbay, Kasama Namin!

VOLUNTEERS

Donnie Vera and Friends
Donnie Vera/Michelle Almirez
Dr. Calvando
Dr. Mafari / Baby Jasmin
Dr. Rhia Streegan / Anjo Purzalan pt. Ezekiel
Dr. Vicky Andaman
Dra. Emma Parian
Dra. Maria Pilita Ester Gurango
DUNKIN DONUTS DAY - Richard Dineros, Marktg Services Officer - Ms. Gayle Endoso
Dylan and Layla Barinaga
EARIST, Manila Miss Blessy Sabile - Ms. Kimberly Rose Nigos COMSA Pres.
ECLARO Business and Solutions, Inc. Ms. Alyanna Yu
Eden Saunders / Tess Lorenzo
Edgeline O. Pascual
EDVEN Loyalist (Edward & Heaven) - Ms. Cj Villarias
Eizelle Bernardino - UST student
Elaine Hernandez
Eleanor Calud
Ema de Jesus / bday - Miko - friend John Redi
Emma G. Barrion
Employees of Fatima Univ. Medical Ctr. c/o Sir Ronnel Dimaala / Ms. Jingle Dungo
Epilepsi Camp - CDIFI - Center for Devtal Intervention foundation, Inc.
ETC - Elegant Trio Colors Corporation - Ellen B. Tiamzon
Evelyn Reyes
Erika De Sato
Erika Z. Zato
Gabriella Nacu
Giselle Lim / PEL Outreach c/o De La Salle-College of Saint Benilde
Glo Guste
Grace dela Pena
Gretel Yadao
Heldi Dy
Heldi dy - w/ German Friend
Heldi dy - w/ German Friend
Heldi Dy and Friends
Iza Ladra
Jack Natividad and friends
Janelle and Friends c/o Ms. Gigi
Janille Velasco / Jazz
Jaq Islo
Jena Go / City of Dreams / Max F. Chx/ 8 Cuts Burger
Jennifer dela Cruz friend Ms. Rory Villamor (nurse)
Joy Mata
Karen Castellano - Werner Co. Australia



Maraming Maraming Salamat po Sa Mga Kaakbay, Kasama Namin!

VOLUNTEERS

Karla Eunica Caparas
Lamera
Leslie Anapitan and
Lita (mother of Hema patients)
Liz Mendoza- UP Psyche Students
Loida Mateo and Friends
Lorie Anda - Phil. Science HS
Louie Rozanne Taa
Mae de Leon/ Miss Salve
Mae Manuoduc
Maika Lynne H. Borja - PCMC Nurse
Maita Salvador group
Marissa Yap
Mantes Lim c/o Ella Valenzuela
Mary Ann Mamaril
Mayet / c/o Danz Semilla
Mercy Tupaz Villas
Merlie Aguilar & Friends
Mia Valdez - Donor Angelita Ang and Ms. Rosel
Nena Dumol and Friends
Nina Ladines
Patricia & Friends
Pauline Bautista
Pauline Palisoc - Galleguez / Joyce Anne Sarte
Precious Cruz
Princess Quijano
Rhina Montemayor and
Rosel / Mia Valdez
Roxanne
Shiela Bautista and family
Tet Viado
Tinette Abad and Friends
Multiple Intelligence I.S. - Kurt Inductivo / Kelly Inductivo
My Birthday Foundation
Myma Bangcaya and family
APOLCOM - Miss Maria Christina Tan
Napolcom - Mr. Jose Consul
Napolcom (Coop)
National Dairy Authority coord. w/ dietar div.
National Grid Corporation - Miss Ria Gonato - Marietta b. Pascual
Nephro Christmas Party Sponsored by Cong. Karlo Nograles
Neuro Dev. Christmas Party - Dr. Ermenilda L. Avendaño
New Arcond builders, Inc. - Edilyn Caluma (Eds)
New Arcond builders, Inc. - Edilyn Caluma (Eds)



Maraming Maraming Salamat po Sa Mga Kaakbay, Kasama Namin!

VOLUNTEERS

NEW CORE Industries Miss Racel Jose
Nizer K. Sarapuddin
Noah Foundation - Aileen Monica Galang
Office of Rep. Bolet Banal
OMBUDSMAN Jollibee Program
Orient Tech
Our Lady of Lourdes Sch. QC - Carlo dela Cruz
Owen Koa
Paramount Insurance Company - Loradel M. Atmosfera
PAREF Preschool - Eva Mayoria
Pastor Alberto Chan
Patrick Adrian T. Libao
Pauline Guevarra
PBK - Project Brave Kids Christmas Program
PCMC CARDIO DEPT.
PCMC Childrens Program
PCMC Gastro Department
PCMC Pulmo Dept.
Pediatrica -Unilab - Joseph P. Lee
Phil. Health Insurance Corp. - Ms. Cheryl W. Peña - OIC
Phil. Normal Cellerge High School c/o Cecil Ratilla (Ombudsman)
Philippine Assoc. of Functional Jaw Orthopedis
PAFJOTMU, INC - La Union Chapter - Dr. Marissa Joan D. Pasajol
Philippine Business Bank - Ms. Vianne gairan
PNU HS Batch 80' - Ms. Cecille
Precious Heritage Ministries Fdn. Inc. - Remeilyn Dollete
Princess Rigurica and Friends
Project Brave Kids /UA&P students c/o Miss Rita Aquino
Pru Life UK - Asst Unit Manager, Alexandrite 2Mary Babe Jamerlan
PSCI - Phil. Science HS - Rafael Santiago
Pt. of Dr. Alexis Reyes
PYCOR thru Ms. Aleie Villarino
Quadrangle Boys / (Home Mark Inc)
Racks Group - Janice Querubin
Rafael Puerte B. Alvarez
Rafael Santiago - Psci Students
Ralph Reyes / Cecille de Leon
RAPIDE - Kristian Ganaden
Rave for a cause - BSTOURISM mgt.4 - Ma. Arabela C. Escarez
Rebisco
REHAB MED DEPT.
Rep. Jorge "Bolet" Banal - Bingle Custodio
Ridge School - Principal: Brenda martinez-Ustaris
RMSC Skin Care Products EON skin care - John Calvin Cometa / Cherry Mangali



Maraming Maraming Salamat po Sa Mga Kaakbay, Kasama Namin!

VOLUNTEERS

Roanne Mae Flora
Ronnie Liang and Friends
Rotary Club of Mia, Harbor, Dist. 3810 - Ms. Kles Hernandez
Rotary Club of Sampaguita
Rotary Club of Valenzuela
RUMACH CORPORATION - Ms. Christine
Santos, Family - Julie May Santos
Sarah Aubrey M. Bolano
Section of Pediatric Nephrology
Serendipity de Quiroz
Seventh Day Adventist Bryan Agudo
SHAN '88' batch - Virgie Tanghal
Shirley Aguilar
Sierte - pt. Paolo Magday
Siew Hwa Guansing Group
SIG Angels- (regular Donors)
Sigrid Perez - PBK
Silver Finance Inc - Jann Casin
Simply Alden Fans Club Ms. Kathleen Mendez
SITEL Kimmy Villa
SPO1 David
SPO1 Jonathan David
SPO1 Jonathan U. David / Gerardo Angeles
St. Jude SJCS 95 Bravehearts - friend Sir Anthony Garcia
Stephanie Jimenez
Sterling Talent Solutions - Miss Thea Gile (Step Juan)
Susan Barlin / Chris Sta. Cruz
TAISHO Pharmaceuticals Phils. Inc.
Ms. Janeth M. Leus - Brand Manager, Consumer Grpu TPPI
Take time Mountaineers - Ms. Annalyn Oraiz
Tanglaw - Miss Cristine regular visitors
Tanglaw - Ms. Lorie Anda
Tanglaw - Regular Visitors
Tanglaw Center
TB DOTS Dept - Jbee Robinsons Nova/Jbee NBS
Temps and Staffers, Inc. - Butch Guerra / Ms. Anne Soriano / Vivian Guevarra
The Quadrangle Boys TMB - Leilanie S. Latorre
Thea Ibarra
Thru. Dra. Fatima Gimenez
Tonight with Aldub Nation - Alexandra Medel
Tourism Board of the Philippines - Julie F. Bolante - Information Systems Analyst
Trans Asia Connect - Miss Maui
TRISQUILLON DRIVERS of QC - Mr. Mark Oliver Dacumos
"U" Happy Events Miss Nikki



Maraming Maraming Salamat po Sa Mga Kaakbay, Kasama Namin!

VOLUNTEERS

UNAWA Universe Awareness - Ms. Rheanne Odessa Jimeno
Unilab - CSR
UP Economics Society
UP Economics Society / Betina Sales
UP ICTUS
UP NSTP - Gianna Mae G. Galicinao
UP Prep/Creates - Ms. Wyrzyleen L. Lee
UP Psychology Students - Ms. Beth Mendoza -
Weng Delgado (U Happy Events)
Weng Mesina and Friends
Weng Pablo/ Grace Bello / Raquel Balderama
Wichdom Charity
Wilma Afante
Wmabini '99 (Valenzuela National H.S.)
Wonina Lily S. Sison - Miriam College
Word of Hope group
WORDSTOFLESH - Ms. Melody Loagan
Xari Camba - UST student / Mother Atty. Dyna Camba (Ombudsman)
Yesh Burce
Zenzest
Zero Gravity (regulars) Friend Dr. Robles - Junell Dumangon
501st Legion - Star wars day - Michelle Anne Mangubat, MD
501st Legion Phil. Gamison / Dr. Michelle Mangubat
7th day Adventist group
8Thirty one Corp



Maraming Maraming Salamat po Sa Mga Kaakbay, Kasama Namin!

DONORS

Agnes Gaje (DBU JCG Aircondition)
Angilyn Jazmin
Asia Select /Mr. Robert Navaro
Atty Carol Mercado
Atty. Cherry Bolo
Balugay, Enrique
Bank of the Philippine Islands
Binangonan Mun. - GF
BIR Catholic Community
Bonsai Exhibit
Books For Less
Breakthrough and Milestones Productions
Brgy. Apolonio Samson
BTIC, Inc.
Caritas Manila, Inc.
Chow Chow Club, Phiils.
Chummy Chum Foundation
Ciara Marie Foundation, Inc.
City Govt. of San Pablo
Counc. Marvin Rillo
Craniofacial Foundation of the Philippines
Eagle Matrix Security Agency
Eagle Matrix Security Agency, Inc.
ECLARO
Enterprise Systems Dept.
Estima, Inc.
Extension for Child Life Found. Inc.
George Ong Tan / Pasig Host Lions
Geraldine Marinas
Getwell Health System
Ghenn Limbo
GlaxoSmithKline Philippines
Global Gem 88 Tours
GX International, Inc.
Happy "U" Events
Impexcoc Co.
Innovasia Premier Enterprises
Jaram & Friends
Jeffrey Aguiman
Johnson & Johnson
June Ambrosio
Kalbe International
Kambal Pandesal
Kids 2 Foundation, Inc.



Maraming Maraming Salamat po Sa Mga Kaakbay, Kasama Namin!

DONORS

Lea Soriano / Rene Soriano
Leonardo Amancio
Ma. Clarita M. Ong or Allan Y. Ong
Ma. Luisa Hipolito
Ma. Teresa Tan
Mabuhay Shriners
Madarong, Manry
Making Lives Better with Alorica foundation, Inc.
Manuel Wong / Johnny Tan / David Lo
Maria Antonette Cac
Maria Isabel Opena
Marie Aude Reber
Ruel Ramos
Stella & Rolando Sandiko
Andy Cao
Amulfo Teves
Joselito Guillermo
June Fuentes
Kirk Collier
Manuel P. Oxales
Melchor Chua
Rod Racionales
Ted Bautista
Heldi Dy
Lea Soriano
Rosita Baluyot
Angilyn Jazmin
Catherine De Mendoza
Fatima Santos
Geraldine Marinas
Heldi Dy
Joy Mata
Kristine Fineza
Lea Soriano
Reina Rondon
Renee Javier
Roxan Del Rosario
Yam
Yolanda T. Wu
Mun. City Govt. of Gen Trias-GF
Mun. Govt. of Pulilan - GF
Mun. Govt. of San Pablo
Mun. of Binangonan
Municipal Govt. of Gen. Trias - GF



Maraming Maraming Salamat po Sa Mga Kaakbay, Kasama Namin!

DONORS

Mun. of Rosario - Cavite
Mun. of Rosario - Cavite
Mun. of Subic - GF
Municipality of Binangonan - GF
NAPOLCOM c/o Mr. Jose Consul
New Core Industries, Inc.
NMG Realty
Pasig Host Lions Club
Pauline Bautista
Pediatrica
Phil. Educational Theater Assoc.
Phil. Science High School
Philippine Garrison 501st Legion
Prince Ace Corp.
Quezon City Travel Agencies
RC Sampaguita Grace Park
Redemptorist Baclaran Church
Rogee Pe-Pua
Rolando & Stella Sandiko
Rosita Soliman Foundatio, Inc.
Rotary Club sampaguita - Grace Park
Roxan Del Rosario
SAM (Alden Richards)
San Miguel Corporation
Sandiko, Stella / Rolando
Sen. Nancy Binay
Silver Finance
Silver Finance Inc.
Sis. Faustina De Luna Foundation, Inc.
Sylvia Salvador
Teresa, Jopson
Teresita Bea
Trip Ventures Int. Travel and Tours
United Laboratories (UNILAB)
University of Asia & the Pacific
Villa Firenze Homeowners
Winterpine Marketing Corporation
Private and Anonymous Donor



*Awards, Recognition
and Citations*



THE
2017 ROTARY
GOLDEN WHEEL
AWARD
FOR
HOSPITAL MANAGEMENT



Presented by



4 FEBRUARY 2017
CROWNE PLAZA MANILA

Congratulations!

JULIUS A. LECCIONES, MD, MHA, MPM, MScNSM, CEO III
EXECUTIVE DIRECTOR



With our whole hearted appreciation
Thank you very much
Ma'am **Jara Corazon O. Ehera**
(Retired: February 19, 2018)



TY, FLORENTINA U., M.D.
Medical Specialist IV
Pediatric Critical Care Center
Date of Retirement: March 15, 2017
More than 23 years in service



TIERRA, MONICA F.
Division Chief II
Finance Division (General Accounting)
Date of Retirement: August 22, 2017
More than 36 years in service



VENTURA, MARIETTA F.
Midwife II
Nursing Department
Date of Retirement: October 12, 2017
More than 29 years in service



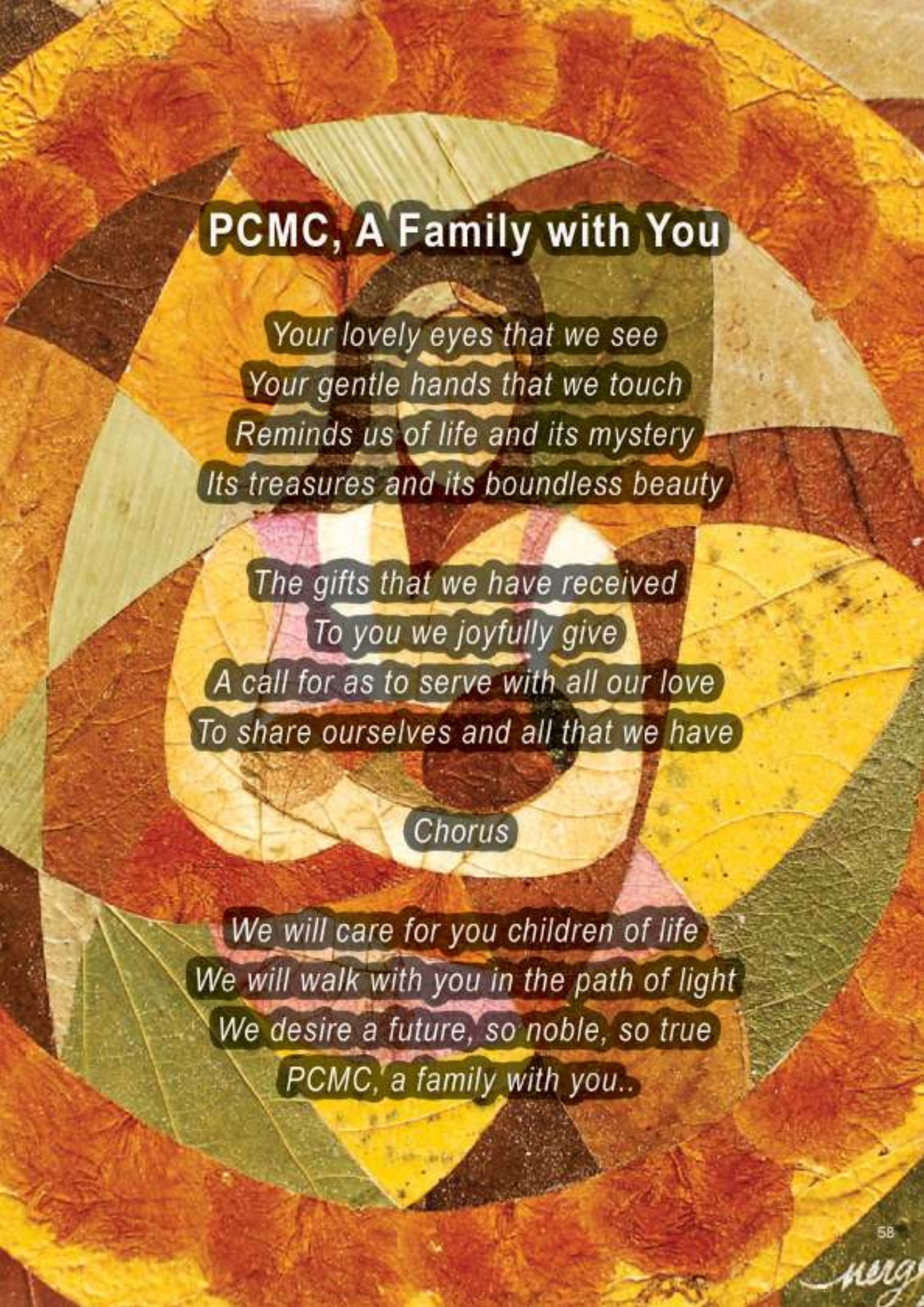
DE LOS REYES, RODOLFO A.
Division Chief II
Human Resource Management Division
Date of Retirement: November 9, 2017
More than 9 years in service



ORTIZ, MARILYN H., M.D.
Medical Specialist III
Child Neuroscience Center
Date of Retirement: November 11, 2017
More than 27 years in service



MACAPAGAL, JOSE E.
Clerk III
Medical Records
Date of Retirement: December 3, 2017
More than 26 years in service



PCMC, A Family with You

*Your lovely eyes that we see
Your gentle hands that we touch
Reminds us of life and its mystery
Its treasures and its boundless beauty*

*The gifts that we have received
To you we joyfully give
A call for us to serve with all our love
To share ourselves and all that we have*

Chorus

*We will care for you children of life
We will walk with you in the path of light
We desire a future, so noble, so true
PCMC, a family with you..*



**PHILIPPINE
CHILDREN'S
MEDICAL CENTER**

Corner Aguirre Road,
Quinson Avenue, Quinson City 1100
website: www.pcmc.gov.ph
email: officeofthedirector@pcmc.gov.ph
Toll-free: 508 5600 Fax No.: 504 0840